



PHOTO EDITING FOR PHOTOGRAPHERS

CaptureNX

At the heart of the image

UPOINT™
TECHNOLOGY
by Nik Software

Intuitive editing, elegantly simple



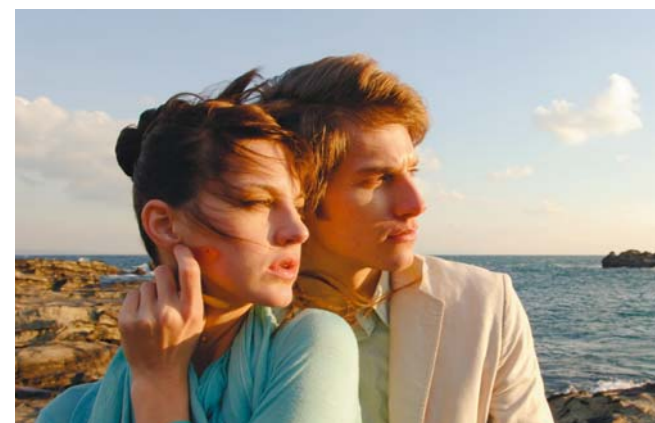
<http://capturenx.com/>



Fast forward to a new generation of image editing

Go to the next generation of high-quality image editing and processing to supercharge your workflow. Advanced Nikon Capture 4 plus exclusive patented U Point™ technology, by Nik Software, delivers easier access to the results of your imagination.

The new Capture NX software releases not only the newest powers of Nikon's Electronic Format (NEF) files; for the first time, it makes JPEG and TIFF processing and editing elegant and easy enough for any photographer to implement, with no need for complicated procedures. Its new interface provides access to powerful and visually intuitive enhancement tools you need, so it's easier to explore, with more visual potential. With Capture NX to realize your imagination, the possibilities are endless!



U Point™ Technology

Making advanced image editing more visually intuitive, Nikon's new way

Only Capture NX image editing uses Nik Software's patented U Point™ technology to give you the results that you envision. This new innovation in photo image processing and editing, applicable to Nikon's NEF files as well as any camera's JPEG and TIFF files*, features powerful tools to enhance images without the complicated processes of other photo editing software; implementation using Capture NX is elegant and easy by design. Simply select among the available Control Points and adjust each point's sliders until you see the image as you like it. It's a highly visual, intuitive technique. The extensive Nikon toolbox for NEF that is provided complements U Point™. This combination of features is unsurpassed!

* Please refer to Functions/Files Compatibility Chart on back of this brochure for details about file compatibility.

Color Control Points

Color Control Points let you directly select and isolate an entire image or an area within it for enhancement in a fraction of the time that other image editing tools require. Within moments, you can choose and use any Color Control Point to modify hue, brightness, saturation, red, green, blue, warmth and contrast within each selected area. When you use multiple Control Points, Capture NX learns to distinguish among the Control Points and effects changes to your desired area-selection. So you save time and eliminate complication. With Color Control Points, it takes just a few seconds to achieve the degree of professional quality image enhancement and control you want!

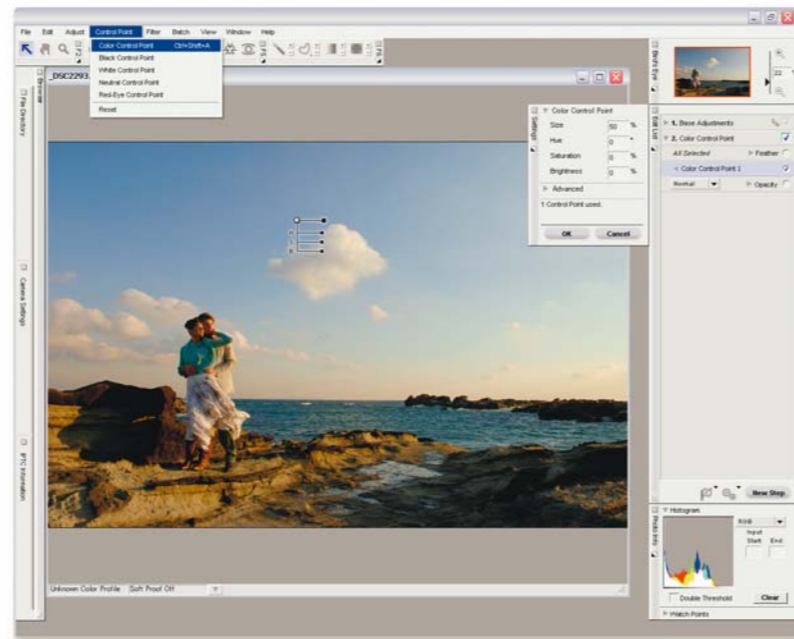
Black, White, Neutral Control Points

Black, White and Neutral Control Points can be used to set the dynamic range and correct color casts in your images. Neutral Control Points can also be used to set color balance in an image. Each Control Point appears on the image and can be easily dragged from point to point, for precise movement and positioning to achieve the desired effect. The Control Points' sliders let you adjust their effect for the respective Control Point areas. Neutral Control Points can be used to set a targeted color

to any color available within the color picker. This is useful for removing color casts and toning, even without a neutral object in the scene. Use of multiple Neutral Control Points helps reduce multiple color casts and enhance selected colors in images. The drag, point and slider control is very easy to use, yet very powerful and creative in its effect!

Show Selection for Accurate Control

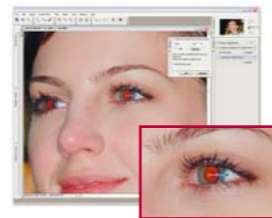
Use the "show selection" feature for each Color Control Point



to see which area of the image is affected by the Color Control Point. This process reverses the image into a black and white view and clearly shows the image areas under adjustment.

Red-Eye Reduction

Thanks to U Point™ Technology, red-eye can be easily removed. Just place a Red-Eye Reduction Control Point on each of the offending eyes, and away it goes! With just a few slider adjust-



ments, you can use a Color Control Point to make blue (or any other eye color) eyes brighter, darker or more radiant. With a mere Ctrl-D click, you can duplicate your Color Control Point so you can rest assured that the effect to each eye will be the same.



Show Selection

Setting great value on photographers' spirits

• Non-Destructive Image Editing

Capture NX applies non-destructive image processing to NEF files, which means that you'll never compromise your original NEF images or image quality. All enhancements are saved in an Instruction Set along with the original data and Thumbnail. Ordinarily, changes made to a JPEG or TIFF file will affect its original image data; to avoid this, save as another file name, or use Nikon's original technology. So instead, your Original JPEG and TIFF images can be saved conveniently as "converted" NEF files.

• NEF Quality

To help you realize more of the potential of NEF, Capture NX utilizes camera settings within any camera-produced NEF file and ensures that parameters set within any Nikon camera-produced NEF file (White Balance, Sharpening, Color Mode, Saturation, etc.) are applied to the image as originally selected. So your creative picture taking decisions are preserved, and there's less to do later, when you're working on your picture on a computer.

Versatile Functions

Enjoy the sheer power and convenience of intuitive photo editing

◆ Selective Tools

With Capture NX, you get additional tools for selective application of over 25 enhancements. For example, the Brush tool can paint in or paint out an enhancement, the Lasso and Marquee tools offer familiar selections, and the Gradient tool can gradually add or remove an effect.

◆ Browser

The completely redesigned Capture NX Browser lets you sort, organize, compare, tag and improve images. Use it to select an image to enhance, rename a series of photographs, or quickly and easily apply a batch process to a group of images.

Batching

By automatically applying one or more enhancements to a series of images, the new, improved batch processing of Capture NX gives photographers superior benefits of simplicity and saved time.

◆ Edit List

For easier, more intuitive photo editing, the Capture NX Edit List helps you to track, cancel or add new modifications.

Markers

Markers is a very powerful tool for Nikon's NEF files, making it possible to create multiple versions of your original NEF image, all within the original image file. Imagine, 2, 6, 8, 10 or more versions within one file! There is no need to search your computer to find versions — just open the original NEF and click on the Markers to review them. Nor is there any need for extensive hard disk space for many copies of versions. All such copies can be contained in one file for convenience, creativity and efficiency — the original file's size changes by a tiny amount! The original NEF's raw versatility is retained, as the original image and each version is securely stored.

◆ Lens Correction Tools (some functions available for RAW files only)

Expand your imaging possibilities with three original tools for correcting various lens effects: Vignette Control can automatically reduce the effect of marginal lumination; Color Aberration Control can reduce color fringing effects; and Distortion Control can reduce pincushion and barrel distortion effects.

Advanced Noise Reduction

Capture NX noise reduction offers the latest, most advanced Nikon algorithms to reduce or remove unwanted noise while

retaining important details in the image. This tool is especially useful for images shot with high ISO.

16-bit image compatibility (available for RAW and 16-bit TIFF files only)

Capture NX functions are fully compatible with 16-bit images, regardless of whether they originate as NEF or 16-bit TIFF files. This ensures that all editing enhancements deliver as much detail in your images as possible.

◆ Color Management

With Color Management tools, Capture NX makes workflow management more comprehensive. For example, the ability to convert and assign a color profile helps ensure that colors are accurate from your first to last edit. Utilize Capture NX's Soft Proof tool to view how a specific printer will recreate image colors on your monitor. The Capture NX print function lets you use an assigned profile to print your images.

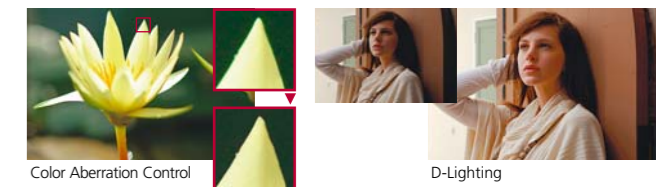
D-Lighting

The D-Lighting tool lets you simultaneously reveal details in shadows and highlights, and correct for areas of underexposure, backlighting or insufficient flash, without altering properly exposed areas or introducing unwanted artifacts. Slider control allows you to select the relationship of brightness to darkness. When used with Nikon's NEF Exposure Compensation tool for restoring lost highlight details, the combination of Exposure Compensation and D-Lighting can help you recover many images that you might otherwise discard.

Printing

Capture NX makes printing very convenient. From directly within the software's Editor and Browser modes, you can command printing of individual images, contact sheets and print packages, while maintaining a fully color-managed workflow.

Features and functions not shown here, but which are available in Nikon Capture 4, are included in Capture NX as well.



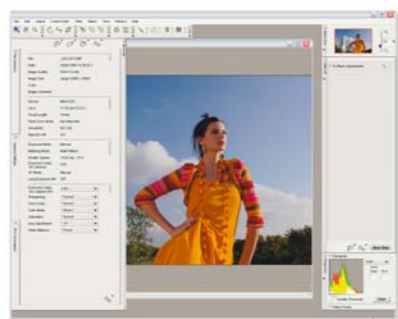
Make the editing process faster and more efficient

With Capture NX's advanced technology, you need less time to make changes on each image — saving you a great deal of workflow time.

Take a picture in NEF (RAW) format

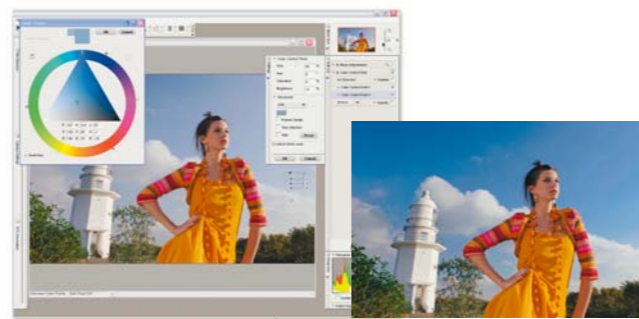


Capture NX features the most advanced tools for processing NEF files. When working with a NEF file, open the Camera Settings palette to adjust parameters that you set within your camera. The palette lets you reprocess the image with alternative settings that correspond to those made in-camera. Capture NX enables finer control for more subtle adjustments.



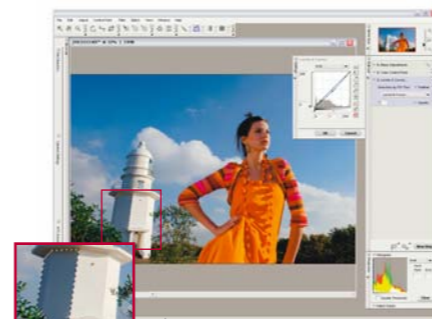
Apply RAW Adjustments.

Capture NX offers some of the most advanced tools to enhance image color and light. Use them to brighten shadows, add contrast, enhance saturation and warmth, control color balance of the image, and much more.



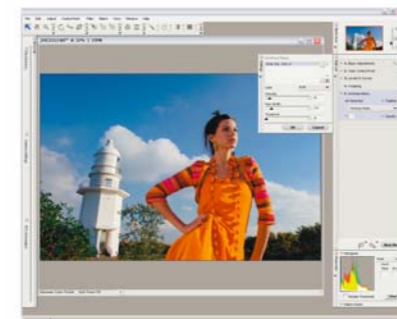
Apply Global Adjustments.

Selectively apply any of over 25 enhancements available within Capture NX using one of the selective tools, including the Selection Brush, Lasso and Marquee Tools, and Selection Gradient.



Apply Selective Adjustments.

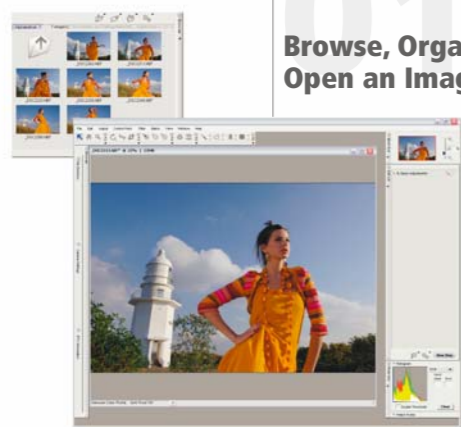
Use the Unsharp Mask tool in Capture NX to enhance detail in your image. Then, use the updated Print dialog in Capture NX to set color management settings and print the image.



Sharpen and Print the Image.



Start editing



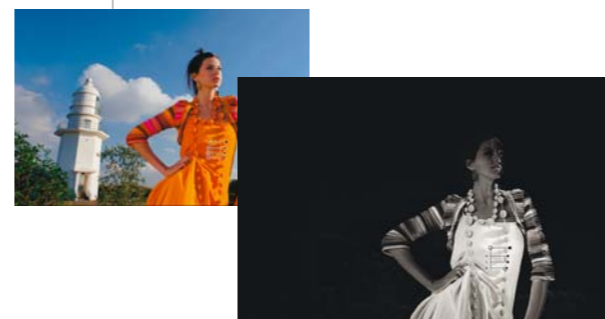
Browse, Organize and Open an Image.

Select an image using advanced tools within the Browser. Various functions can help you compare images and choose one for enhancement.



Correct Tonality and Color Cast.

Use the new Black, White, and Neutral Control Point tools to set dynamic range and correct color casts in the image. Black, White, and Neutral Control Points make producing the results that you envision a more naturally intuitive process.



Selectively Control Color and Light.

Use the new Color Control Points to control the color and lighting of objects selectively throughout the image, without complicated processes and tedious selections. With Capture NX, this control is visually clear!



Resize and Crop the Image.

Change the size and resolution of the image using the Size / Resolution feature, then crop the image to the correct aspect ratio using the Crop tool.



You'll fully understand the possibilities after you see the results.

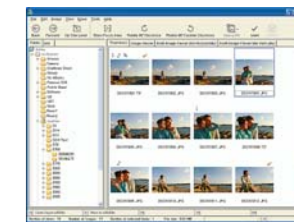
Nikon Software Optional Accessories

Powerful, versatile tools to enrich the creative process.

Like Capture NX, other Nikon software makes photography a richer experience for professionals as well as amateurs. Use this smart family of software to refine your creative process and picture editing artistry.

• Nikon View Pro

Nikon View Pro is a powerful browsing and viewing application capable of displaying massive volumes of high resolution image files instantly. This makes it convenient to find your best images quickly, and view them full-size. Or, compare them side by side or on thumbnails to delete unwanted shots, tag photos and sort them into multiple folders. The new software is fully compatible with IPTC (International Press Telecommunications Council) standards, so it is simple to apply and edit IPTC data for smart image sorting.



• PictureProject (provided complimentary with all Nikon digital cameras)

Created for Nikon digital camera users to organize, edit, enhance, display and print images, PictureProject even has built-in technology for e-mailing images, burning images to CD and DVD and more. It's the essential accessory, compliments of Nikon. The following software expands the functionality of PictureProject even further:

- nik Color Efex™ Pro 2.0 Express Edition

Offering fifteen kinds of digital filters for professional-level filtering effects, nik Color Efex™ Pro 2.0 Express Edition can help you apply considerably more artistry to your work.

- PictureProject DVD Show

With PictureProject DVD Show, still images and movies made with your still digital camera can be edited automatically into a video clip with effects and music. Such video clips can be burned to DVD or CD (Windows only).

- PictureProject COOLPIX Remote Control

PictureProject COOLPIX Remote Control lets you command operations of COOLPIX S4, COOLPIX L1 and COOLPIX 8800/8400 cameras using the compatible USB cable connection between camera and computer.



nik Color Efex™ Pro 2.0 • Remote Control • nik Color Efex™ Pro 2.0 • DVD Show

System Requirement

Windows

- CPU** 1.0 GHz Pentium III or higher (2.0 GHz Pentium 4 or higher recommended)
- OS** Windows XP Home Edition, Windows XP Professional, Windows 2000 Professional
- RAM** 256 MB minimum (1.0 GB or more recommended)
- Hard Disk** 200 MB required for installation
- Display** 800 x 600 pixels (1024 x 768 or higher recommended) with 16-bit color (High Color/thousands of colors) or 24-bit color (True Color/millions of colors) recommended.
- Other**
 - CD-ROM drive required for installation
 - Internet connection required for some options

Macintosh

- CPU** G4 or G5
- OS** Mac OS X (version 10.3.9 or later)
- RAM** 256 MB minimum (1.0 GB or more recommended)
- Hard Disk** 200 MB required for installation
- Display** 800 x 600 pixels (1024 x 768 or higher recommended) with 16-bit color (High Color/thousands of colors) or 24-bit color (True Color/millions of colors) recommended.
- Other**
 - CD-ROM drive required for installation
 - Internet connection required for some options

Functions/Files Compatibility Chart

File		Nikon D-SLR images	Nikon COOLPIX RAW (NEF) images	JPEG/TIFF images created with Nikon COOLPIX or other digital cameras
Camera Adjustments	Color Mode ^{*1}	✓	-	-
	White Balance ^{*1}	✓	✓ ^{*2}	-
RAW Adjustments	Exposure Compensation ^{*1}	✓ ^{*3}	✓	-
	Auto Color Aberration Control ^{*1}	✓ ^{*4}	-	-
	Image Dust Off ^{*5}	✓ ^{*6}	-	-
Lens Adjustments	Vignette Control ^{*1}	✓ ^{*7}	-	-
	Fisheye Image Transformer ^{*8}	✓	-	-
Color Aberration Control		✓ ^{*4}	✓	✓
D-Lighting ^{*9}		✓	✓	✓
10 Megapixel Output		✓ ^{*10}	-	-

*1 Can only be applied to NEF (RAW) image data. *2 Calculate Automatically option is not available for new white balance setting. *3 When opening NEF image data with Capture NX, for which a negative value had been chosen for exposure compensation using Nikon Capture version 4.3.2 or earlier version, adjustments added to areas blown out in the original image might not be realized on the newly opened data. *4 With D2X and D200, this function is not available for use with multiple exposures or images created with image overlay. *5 Can only be applied to NEF (RAW) image data taken with a CPU lens. RAW data created with a camera that doesn't feature Image Dust Off is acceptable only if taken using required settings. *6 For the D1X/D1H, Image Dust Off is only available with firmware version 1.10 or a later version. Cannot be applied to images created with the D1. *7 Automatically applied to the RAW image data created with a combination of a D- or G-type lens and a digital SLR camera compatible with lens information records (D2 series, D200, D100, D70s/D70, D50 and D1X/D1H firmware version 1.10 or later). *8 Compatible with AF DX Fisheye 10.5mm f/2.8G ED lens only; does not correctly process images taken by a D2X with Hi-speed Crop On. *9 D-Lighting corresponds to Digital DEE featured in Nikon Capture Version 4.1 or earlier version. Adjustments made using Digital DEE function will not be realized on the NEF image data opened by Capture NX. *10 Can only be applied to RAW image data created with a D1X.

Microsoft® and Windows® are either registered trademarks or trademarks of Microsoft Corporation in the United States and/or other countries. Macintosh® is a registered trademark or a trademark of Apple Computer Inc. in the United States and/or other countries. Images on LCDs and monitors shown in this brochure are simulated. Specifications and product designs are subject to change without any notice or obligation on the part of the manufacturer. February 2006
©2006 NIKON CORPORATION



WARNING

TO ENSURE CORRECT USAGE, READ MANUALS CAREFULLY BEFORE USING YOUR EQUIPMENT. SOME DOCUMENTATION IS SUPPLIED ON CD-ROM ONLY.



NIKON CORPORATION

Fuji Bldg., 2-3, Marunouchi 3-chome, Chiyoda-ku,
Tokyo 100-8331, Japan

<http://nikonimaging.com/>