

## Nikon Digital SLR Camera D40 Specifications

<b>Type of Camera</b>	Single-lens reflex digital camera
<b>Effective Pixels</b>	6.1 million
<b>Image Sensor</b>	RGB CCD, 23.7 x 15.6 mm; total pixels: 6.24 million
<b>Image Size (pixels)</b>	3,008 x 2,000 [L], 2,256 x 1,496 [M], 1,504 x 1,000 [S]
<b>ISO Sensitivity</b>	200 to 1,600 in steps of 1 EV with additional setting one step over 1600
<b>Storage Media</b>	SD memory card, SDHC compliant
<b>Storage System</b>	Compressed NEF (RAW): 12-bit compression, JPEG: JPEG baseline-compliant
<b>File System</b>	Exif 2.21, Compliant DCF 2.0 and DPOF
<b>White Balance</b>	Auto (TTL white-balance with 420-pixel RGB sensor), six manual modes with fine-tuning and preset white balance
<b>LCD Monitor</b>	2.5-in., 230,000-dot, low-temperature polysilicon TFT LCD with brightness adjustment
<b>Playback Function</b>	1 frame; Thumbnail (4 or 9 segments); Magnifying playback; Slide show; Histogram indication; Highlight point display; Auto image rotation
<b>Delete Function</b>	Card format, All frames delete, Selected frames delete
<b>Video Output</b>	NTSC or PAL
<b>Interface</b>	Hi-speed USB: Mass Storage and MTP/PTP selectable
<b>Text Input</b>	Up to 36 characters of alphanumeric text input available with LCD monitor and multi-selector; stored in Exif header
<b>Lens Mount</b>	Nikon F mount with AF contacts
<b>Compatible Lenses*</b>	Type G or D AF Nikkor 1) AF-S, AF-I: All functions supported, 2) Other Type G or D AF Nikkor: All functions supported except autofocus, 3) PC Micro-Nikkor 85mm f/2.8D: Can only be used in mode M; all other functions supported except autofocus, 4) Other AF Nikkor*/AI-P Nikkor: All functions supported except autofocus and 3D Color Matrix Metering II, 5) Non-CPU: Can be used in mode M, but exposure meter does not function; electronic range finder can be used if maximum aperture is f/5.6 or faster *1. IX Nikkor lenses can not be used *2. Excluding lenses for F3AF
<b>Picture Angle</b>	Equivalent in 35mm [135] format is approx. 1.5 times lens focal length
<b>Viewfinder</b>	Fixed-eyepiece penta-Dach mirror type; built-in diopter adjustment (-1.7 to +0.5m <sup>-1</sup> )
<b>Eyepoint</b>	18mm (-1.0m <sup>-1</sup> )
<b>Focusing Screen</b>	Type B BriteView Clear Matte screen Mark V with superimposed focus brackets
<b>Viewfinder Frame Coverage</b>	Approx. 95% (vertical/horizontal)
<b>Viewfinder Magnification</b>	Approx. 0.8x with 50mm lens at infinity; -1.0m <sup>-1</sup>
<b>Viewfinder Information</b>	Focus indications, AE lock indicator, Shutter speed, Aperture value, Exposure/Exposure compensation indicator, Exposure mode, Flash output level compensation, Exposure compensation, Number of remaining exposures, Flash-ready indicator
<b>Autofocus</b>	TTL phase detection by Nikon Multi-CAM 530 autofocus module with AF-assist (range approximately 0.5-3.0m/1ft. 8in.-9ft. 10in.); Detection range: -1 to +19 EV (ISO 100 at 20°C/68°F)
<b>Lens Servo</b>	1) Autofocus (AF): Instant single-servo AF (AF-S); continuous servo AF (AF-C); auto AF-S/AF-C selection (AF-A); predictive focus tracking automatically activated according to subject status, 2) Manual focus (M) Can be selected from 3 focus areas
<b>Focus Area</b>	1) Single Area AF, 2) Dynamic Area AF, 3) Dynamic Area AF with Closest Subject Priority
<b>AF Area Modes</b>	Focus can be locked by pressing shutter-release button halfway (single-servo AF) or by pressing AE-L/AF-L button
<b>Focus Lock</b>	TTL full-aperture exposure metering system
<b>Exposure Metering System</b>	1) 3D Color Matrix Metering II (type G and D lenses); Color Matrix Metering II (other CPU lenses); metering performed by 420-segment RGB sensor
<b>Exposure Metering Range</b>	2) Center-weighted: Weight of 75% given to 8mm circle in center of frame 3) Spot: Meters 3.5mm circle (about 2.5% of frame) centered on active focus area
<b>Exposure Metering Modes</b>	1) 0 to 20 EV (3D Color Matrix or center-weighted metering), 2) 2 to 20 EV (spot metering)
<b>Exposure Modes</b>	Digital Vari-Program (Auto, Auto [Flash Off], Portrait, Landscape, Child, Sports, Close Up, Night Portrait) Programmed Auto (P) with flexible program; Shutter-Priority Auto (S); Aperture-Priority Auto (A); Manual (M)
<b>Exposure Compensation</b>	±5 EV in increments of 1/3 EV
<b>Exposure Lock</b>	Exposure locked at detected value with AE-L/AF-L button
<b>Shooting Modes</b>	1) Single frame shooting mode, 2) Continuous shooting mode: approx. 2.5 frames per second, 3) Self-timer mode, 4) Delayed remote mode: 2 s. delay, 5) Quick-response remote mode
<b>Shutter</b>	Combined mechanical and CCD electronic shutter, 30 to 1/4000 s. in steps of 1/3, bulb
<b>Sync Contact</b>	X-contact only; flash synchronization at up to 1/500 s.

<b>Flash Control</b>	1) TTL: TTL flash control by 420-segment RGB sensor. i-TTL balanced fill-flash for digital SLR and standard i-TTL fill-flash for digital SLR available when CPU lens is used with Built-in Flash, SB-800, SB-600, and SB-400, 2) Auto aperture: Available with SB-800 with CPU lens, 3) Non-TTL Auto: Available with Speedlights such as SB-800, 80DX, 28DX, 28, 27, and 22s, 4) Range-priority manual available with SB-800
<b>Flash Sync Modes</b>	Auto, auto with red-eye reduction; fill-flash and red-eye reduction available with optional Speedlight Auto, auto slow sync, auto slow sync with red-eye reduction; slow sync and slow sync with red-eye reduction available with optional Speedlight Fill-flash and red-eye reduction available with optional Speedlight P, A: Fill-flash, rear-curtain with slow sync, slow sync, slow sync with red-eye reduction, red-eye reduction S, M: Fill-flash, rear-curtain sync, red-eye reduction Auto flash with auto pop-up P/S/A/M: Manual pop-up with button release
<b>Built-in Flash</b>	Guide number (ISO 200/ISO 100, m [ft.]): approx.17 [55]/12 [39] (manual full 18 [59]/13 [42]) -3 to +1 EV in increments of 1/3 EV
<b>Flash Compensation</b>	Standard ISO hot-shoe contact with sync, signal, and ground contacts and safety lock
<b>Accessory Shoe</b>	Electronically controlled timer with duration of 2, 5, 10 or 20 s.
<b>Self-timer</b>	Via Wireless Remote Control ML-L3 (optional)
<b>Remote Control</b>	One Rechargeable Li-ion Battery EN-EL9; charging voltage (Quick Charger MH-23): 7.4V DC, AC Adapter EH-5 (available separately; requires optional AC Adapter Connector EP-5)
<b>Power Source</b>	1/4 in. (ISO1222)
<b>Tripod Socket</b>	Approx. 126 x 64 x 94mm (5.0 x 2.5 x 3.7 in.)
<b>Dimensions (W x D x H)</b>	Approx. 475g (1lb. 1oz.) without battery, memory card or body cap
<b>Weight</b>	Rechargeable Li-ion Battery EN-EL9, Quick Charger MH-23, USB Cable UC-E4, PictureProject, Rubber Eyecup DK-16, Camera Strap, Body Cap BF-1A, Eyepiece Cap DK-5, Accessory Shoe Cap BS-1
<b>Supplied Accessories*</b>	Wireless Remote Control ML-L3, Capture NX, Camera Control Pro, AC Adapter Connector EP-5, AC Adapter EH-5, Video Cable EG-D100, Semi-Soft Case CF-DC1, Speedlight SB-800/SB-600/SB-400/R1C1
<b>Optional Accessories</b>	

The following SD memory cards have been tested and approved for use in the D40:

- SanDisk 64MB, 128MB, 256MB, 512MB, 1GB, 2GB\*, 4GB\*<sup>1,2</sup>
- Toshiba 64MB, 128MB, 256MB, 512MB, 1GB, 2GB\*
- Panasonic 64MB, 128MB, 256MB, 512MB, 1GB, 2GB\*, 4GB\*<sup>1,2</sup>
- Lexar 128MB, 256MB, 512MB, 1GB, 2GB\*

- \*1. If card will be used with card reader or other device, check that device supports 2GB and 4GB cards.
- \*2. SDHC compliant. If card will be used with card reader or other device, check that device supports SDHC.

### Memory Card Capacity and Image Quality/Size

The following table shows the approximate number of pictures that can be stored on a 512MB Panasonic Pro HIGH SPEED memory card at different image quality and size settings.

Image quality	Image size	File size* <sup>1</sup>	Number of available shots* <sup>1</sup>	Number of consecutive shots available* <sup>1,2</sup>
RAW	—	5.0MB	65	5
	L	2.9MB	137	100
	M	1.6MB	235	100
FINE	S	0.8MB	503	100
	L	1.5MB	260	100
	M	0.8MB	444	100
NORMAL	S	0.4MB	839	100
	L	0.8MB	503	100
	M	0.4MB	755	100
BASIC	S	0.2MB	1200	100
	L	0.2MB	1200	100
	RAW+BASIC	—/L	5.8MB* <sup>1</sup>	58

\*1. All figures are approximate and assume average file size; actual file size and memory card capacity may vary with scene recorded and make of memory card.

\*2. Maximum number of frames that can be taken before shooting stops. Actual number of photos that can be taken before buffer fills may vary with make of memory card. Additional photographs can be taken as soon as enough memory is available in buffer.


\*3. Total file size of NEF (RAW) and JPEG images.

Online Video Tutorial - Digitutor  
[http://www.nikondigitutor.com/index\\_eng.html](http://www.nikondigitutor.com/index_eng.html)

● Macintosh®, Mac OS, and QuickTime are trademarks of Apple Computer, Inc. ● Microsoft® and Windows® are registered trademarks of Microsoft Corporation. ● The SD logo is a trademark of the SD Card Association. ● The SDHC logo is a trademark. ● Adobe, Acrobat and Adobe Reader are registered trademarks of Adobe Systems Inc. ● PictBridge is a trademark. ● All other products and brand names are trademarks or registered trademarks of their respective companies. ● Images on LCDs and monitors shown in this brochure are simulated.

Specifications and equipment are subject to change without any notice or obligation on the part of the manufacturer. November 2006

©2006 NIKON CORPORATION

 <b>WARNING</b>	TO ENSURE CORRECT USAGE, READ MANUALS CAREFULLY BEFORE USING YOUR EQUIPMENT. SOME DOCUMENTATION IS SUPPLIED ON CD-ROM ONLY.
---	---

Visit the Nikon Europe website at: [www.europe-nikon.com](http://www.europe-nikon.com)

**Nikon U.K. Ltd.**  
 380 Richmond Road, Kingston,  
 Surrey KT2 5PR, U.K.  
[www.nikon.co.uk](http://www.nikon.co.uk)

**Foto Distributors**  
 516 Kyalami Boulevard, Kyalami Business Park,  
 Midrand, 1684 Johannesburg, South Africa  
[www.nikonsa.co.za](http://www.nikonsa.co.za)



### NIKON CORPORATION

Fuji Bldg., 2-3, Marunouchi 3-chome, Chiyoda-ku,  
 Tokyo 100-8331, Japan  
<http://nikonimaging.com/>



En



*At the heart of the image*

DIGITAL SLR CAMERA

# D40

## Celebrate Every Moment



Isn't it time you switched from simple snapshots to great pictures? If so, then get to know the fun, easy-to-use Nikon D40. Now you can capture spectacular pictures using the type of digital and optical technologies that professionals use, but without the complications and calculations that SLR photography once required. Let Nikon's cutting-edge technology do all the work for you. Just look through the viewfinder and press a button for wonderful pictures you'll be proud of. It's never been easier to capture the moments of your life so beautifully, and that is certainly worth celebrating.

# Less Complication, More Celebration



• Autofocus is supported only with AF-S and AF-I CPU lenses, which are equipped with an autofocus motor.



• Lens: AF-S DX Zoom-Nikkor 17-55mm f/2.8G IF-ED • Exposure mode: [A] 1/250 second, f/2.8 • White balance: Auto • Sensitivity: ISO-equiv. 200



# Less Science Fiction, More Magic

It's never been easier to take amazing pictures



Great pictures have never been easier

Great pictures used to require complicated and cumbersome equipment along with years of experience. Not any more. The D40 is compact, lightweight and designed specifically for ease of use, yet contains all the top-quality, high-performance technologies that you expect from a Nikon digital SLR. And with world-famous Nikkor lenses, you know you have the sharpest and most reliable optical performance available. All in a camera light enough to carry with you everywhere. Beautiful photography has never been easier.

*The large, bright 2.5-inch LCD monitor lets you see your images clearly, while simple help menus are always easy to navigate.*



A fundamental rule of photography: great images come from great lenses. When it comes to quality, Nikkor lenses stand alone in terms of color, clarity and sharpness. Try the D40 with a compact telephoto Zoom-Nikkor lens for family sporting events and beautiful nature photography. And wide-angle Zoom-Nikkor lenses are ideal for everything from everyday picture-taking to capturing breathtaking landscape shots during your vacation.





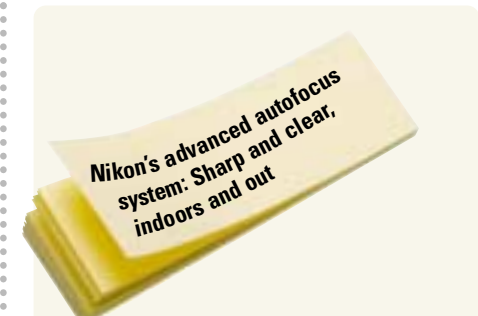
# Less Waiting, More Wonder

Speed and accuracy to act on the moment

## A fraction of a second can last forever

Some of life's most powerful moments are also the shortest: your daughter after her first ballet lesson; your son as he scores the winning goal; your dog catching that first Frisbee. Did you capture the decisive moment? Missing it can be frustrating, but with the D40 those days are over. Just turn it on for a near-instant response (0.18 seconds) and a fast, razor-sharp autofocus. Shoot and voila! Your special moments are saved perfectly.

*Adjust the focus automatically or manually. It's also possible to select a focus area and use focus lock, which lets you recompose a picture.*



Now you can enjoy consistently fast and accurate autofocus in nearly any situation. Whether it's the beach, the soccer field or an amusement park, the D40's advanced technology gives you sharp, clear focusing — even after sundown. It's all because of Nikon's exclusive focusing system called the 3-area Multi-CAM 530 AF Sensor Module. You don't need to remember the name, but isn't it nice to know it's there?



Take up to 100 action shots at approx. 2.5 frames per second using Continuous Shooting Mode.





# Less Night, More Light

Let Nikon flash technology illuminate your images

## Simply brilliant: Nikon flash technology

Light is essential to great pictures. That's why the D40 comes with Nikon's unmatched flash technology. Forget about washed-out, unnatural color. The D40 provides the right light — even in low-light or backlit situations. Just use Auto mode and Nikon will do the calculations for you. The result: subtle, superb images.

For more sophisticated flash photography, try Nikon's external Speedlights. When combined with the D40, the advanced Creative Lighting System turns the darkest situations into dazzling photo opportunities.



The D40 offers the most consistent flash exposures because Nikon's industry-leading i-TTL (Through The Lens) technology is built right in. Before each shot, the camera evaluates the scene to calculate ideal lighting. With every picture comes a new calculation and ideal exposure. Instantly. No extra buttons, no complicated procedures. Just point and shoot and the D40 does all the work. Flash photography has never been easier or more accurate.

*Four flash modes are available: Auto flash, Red-eye reduction, Slow sync and Rear curtain sync.*



Nikon's exclusive i-TTL flash control works accurately even with reflective objects in the background.

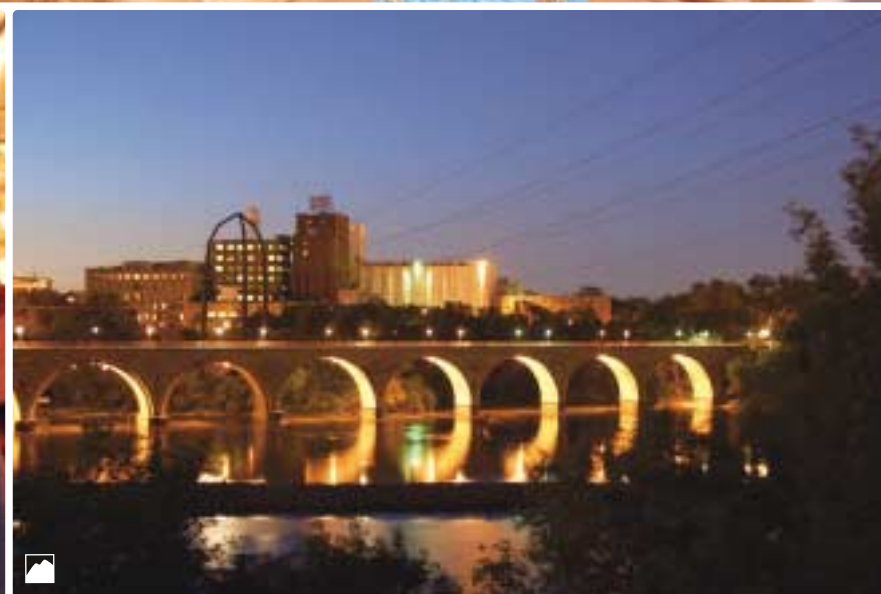




# Less Uncertainty, More Opportunity

Creative photography simply by rotating the mode dial

1 • Lens: AF-S DX Zoom-Nikkor 18-55mm f/3.5-5.6G ED II • Exposure mode: Digital Vari-Program [Child] 1/320 second, f/6.3 • White balance: Auto • Sensitivity: ISO-equiv. 200 2 • Lens: AF-S DX Zoom-Nikkor 18-135mm f/3.5-5.6G IF-ED • Exposure mode: Digital Vari-Program [Portrait] 1/100 second, f/5.3 • White balance: Auto • Sensitivity: ISO-equiv. 400 3 • Lens: AF-S DX Zoom-Nikkor 17-55mm f/2.8G IF-ED • Exposure mode: [AUTO] 1/60 second, f/4 • White balance: Auto • Sensitivity: ISO-equiv. 400 4 • Lens: AF-S DX Zoom-Nikkor 17-55mm f/2.8G IF-ED • Exposure mode: Digital Vari-Program [Close Up] 1/60 second, f/4.5 • White balance: Auto • Sensitivity: ISO-equiv. 400 5 • Lens: AF-S DX Zoom-Nikkor 18-55mm f/3.5-5.6G ED II • Exposure mode: Digital Vari-Program [AUTO (Flash Off)] 1/40 second, f/5.3 • White balance: Auto • Sensitivity: ISO-equiv. 400 6 • Lens: AF-S DX Zoom-Nikkor 17-55mm f/2.8G IF-ED • Exposure mode: Digital Vari-Program [Sports] 1/800 second, f/3.2 • White balance: Auto • Sensitivity: ISO-equiv. 400 7 • Lens: AF-S DX Zoom-Nikkor 17-55mm f/2.8G IF-ED • Exposure mode: [AUTO] 1/30 second, f/2.8 • White balance: Auto • Sensitivity: ISO-equiv. 400 8 • Lens: AF-S DX Zoom-Nikkor 17-55mm f/2.8G IF-ED • Exposure mode: Digital Vari-Program [Night Portrait] 1/10 second, f/2.8 • White balance: Auto • Sensitivity: ISO-equiv. 200 • Built-in Flash: TTL 9 • Lens: AF-S VR DX Zoom-Nikkor 18-200mm f/3.5-5.6G IF-ED • Exposure mode: Digital Vari-Program [Landscape] 8 seconds, f/4.2 • White balance: Auto • Sensitivity: ISO-equiv. 200 \*All photos taken with image quality mode: RAW (NEF)



Get better shots in almost any situation. Each of the eight Digital Vari-Program modes is designed to calculate the best settings for your scene automatically. Simply choose one, or select AUTO and let the D40 do all the work.

**AUTO** **AUTO:** This automatic "point-and-shoot" mode lets you concentrate on getting the shot. Settings are controlled automatically to match shooting conditions.

**Auto (Flash Off):** Captures low-light situations without the Built-in Flash by using available light and boosting light sensitivity. Whether it's a museum, concert or school play, you're ready whenever flash photography is not allowed.

**Portrait:** Select this mode when you want a sophisticated, professional-looking portrait with your subject sharply focused and the background stylishly softened.

**Landscape:** This mode ensures beautiful pictures of landscapes, buildings and other large-scale subjects. It's also ideal for shooting groups of friends and family with a backdrop of beautiful scenery.

**Child:** Capture beautifully expressive images of children with Child mode. Your pictures will feature natural skin tones while clearly and vividly rendering clothing and background details.

**Sports:** High shutter speeds freeze motion for dynamic action shots where the main subject stands out clearly. The camera tracks your subject, adjusting the focus with split-second response.

**Close Up:** Discover the hidden beauty in flowers, coins, insects and other small treasures. Close Up mode renders every detail of the foreground, while a softened background helps your subject stand out. Use a tripod to get the sharpest results.

**Night Portrait:** This mode focuses on the closest subject in a low-light situation and then calculates a balanced exposure for both the foreground and the background. For the sharpest pictures, a tripod is recommended.



# Less Complicated, More Capable

Nikon digital SLR versatility and picture quality in a camera easy enough for everyone



## Exposure compensation

Exposure compensation lets you raise or lower the exposure value from +5 to -5 EV. This means better-exposed pictures in unusual lighting conditions such as dimly lit theaters, sunsets and more.

## Infrared receiver

Use the optional Wireless Remote Control ML-L3 as a remote shutter release for self-portraits or to prevent camera shake caused when releasing the shutter.

## Sure and comfortable ergonomics

Weighing only 475g, this light, compact camera body fits your hand perfectly, with a well-balanced design and grip to ensure easy access to controls.



## Exposure mode dial

All you need is right here. Now great pictures are a snap in every shooting situation. For more control over shutter speed and aperture, choose P (Program Auto), S (Shutter-Priority Auto), A (Aperture-Priority Auto) or M (Manual) mode.



## Built-in Flash

The auto pop-up Flash gives just the right light to make the scene look both beautiful and natural. To extend your flash shooting range and creativity, just add an optional Nikon Speedlight like the new SB-400.



Flash mode button

SB-400 attached to the D40

## Self-timer/Function button

## Nikkor lens\*

All AF-S/AF-I Nikkor lenses work seamlessly with the D40. Each lens features the world's finest optics and precision mechanisms and provides optimized performance for sharp, consistent results.


\*Autofocus is supported only with AF-S and AF-I CPU lenses, which are equipped with an autofocus motor.

## Long-lasting battery

The newly developed Rechargeable Li-ion Battery EN-EL9 lets you take up to 470 shots in single-frame shooting mode (CIPA standards, with Built-in Flash used for 50% of the shots). The optional AC Adapter EH-5 can be used to power the camera for even longer periods (an AC Adapter Connector EP-5 is required, available separately).



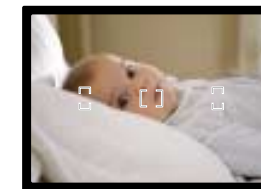
## Detail enlargement function

Press the  button and you can zoom in on your picture as close as approx. 19x (large images). The extra-large, 2.5-inch LCD color monitor is perfect for viewing sharpness or just showing recently captured pictures to friends and family.



## USB connection

Connect easily to your computer using the supplied USB cable. The supplied PictureProject software can then be used to load photographs to your computer where they can be organized, retouched and printed.



## Easy-to-use viewfinder

The D40's optical viewfinder is bright, clear and magnified to ensure an ideal view for precise composition.



## Also available in silver

Black and silver versions are available depending on country or area.

## Information display formats

Choose your view: Classic format or the new Graphic and Wallpaper formats for Digital Vari-Program modes and P/S/A/M modes.



## AE-L/AF-L button

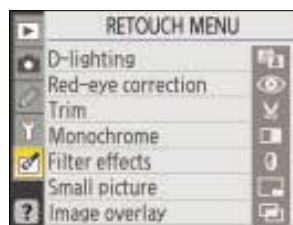
## Command dial

## Multi selector



## Easy setting changes with assist images

The D40 offers handy "assist images" for main camera features when you change camera settings. These images are readily available to help you select the right settings for your pictures.



## Retouch Menu

The D40 lets you edit and enhance your pictures easily in the camera with several color filter effects, or use black-and-white or sepia tone. Simply apply to your images with even more interesting options in the menu. It's easy, convenient, and fun!



## D-Lighting

Does part of an image seem dark with too little detail? No problem. D-lighting lets you enhance brightness or contrast in-camera after the shot is taken.



ISO 800

## Broad ISO sensitivity range

Your D40's ISO sensitivity can be set from 200 all the way to 1600, enabling beautiful images in many challenging low-light situations without using a flash.



Spot Metering

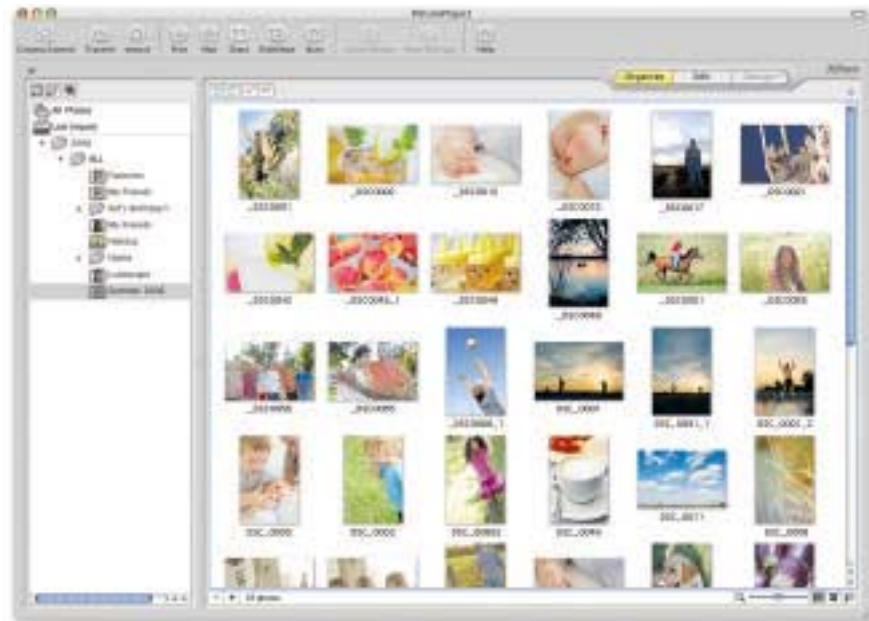
## Metering system options

Nikon's exclusive 3D Color Matrix Metering II instantly evaluates the brightness, contrast and colors of any shooting scenario. In addition, Center-weighted and Spot metering are also available to meet specialized applications.



# Less Hassle, More Potential

Software and accessories to expand your possibilities



## SHOW OFF YOUR IMAGES WITH PICTUREPROJECT

Supplied with the D40 and designed as a simple, intuitive and seamless experience, PictureProject is for digital photographers of any skill level. Its powerful tools let you truly explore digital imaging without having to study for it. It greatly simplifies image transfer and sharing, while giving you basic post-production enhancements on a personal computer. Data in your memory card can easily be uploaded to your computer, and images can be quickly printed, e-mailed or uploaded to an online photo community.

## + ENJOY THESE FUN, EASY FUNCTIONS +



Connect your camera to a computer and your images are automatically imported, with thumbnail previews that make it easy to select and organize your favorites.



Red-eye corrections, brightness and color can be fixed with ease.



It's easy to create slideshows using your favorite music. A variety of effects, including Slide, Wipe and Cross Fade, are also at your disposal.

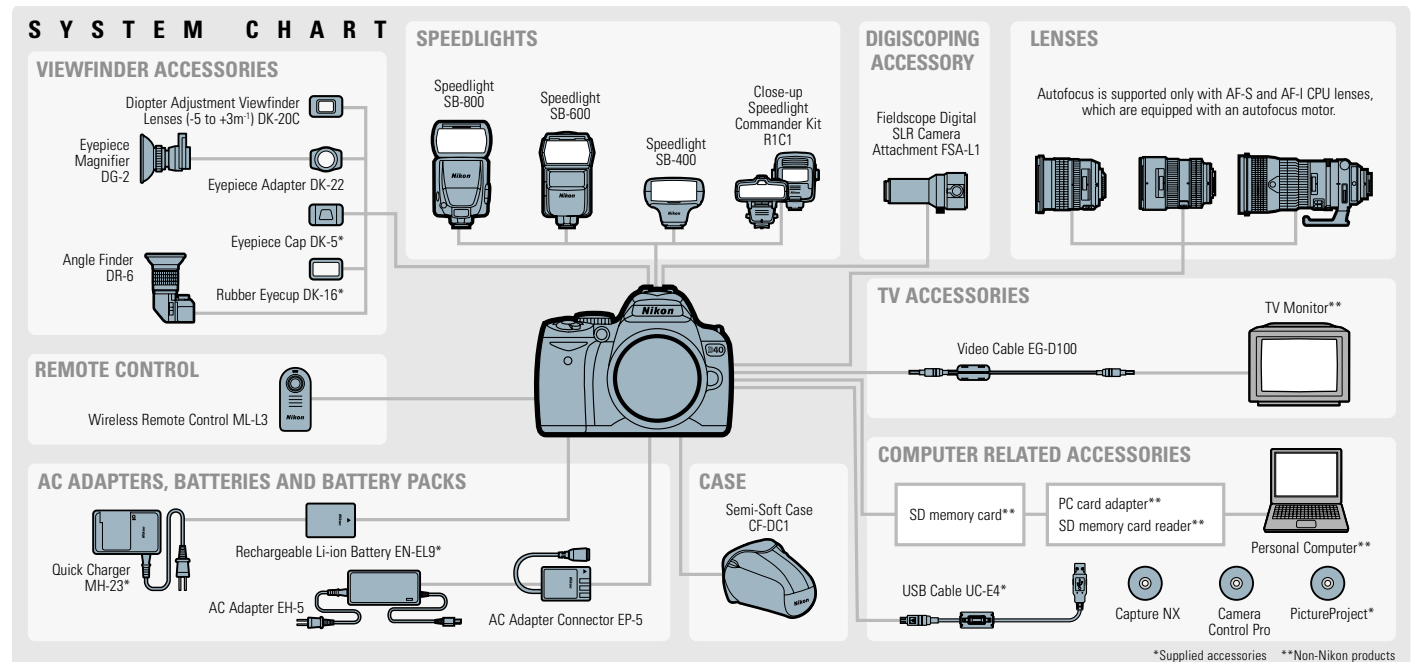


Photo printing made simple. Handy templates and easy-to-select functions such as borderless print offer you a variety of layout options. PictBridge is the quick and fun way to print pictures directly from your camera. Simply connect to any compatible printer using the supported USB.

## PROCESS LIKE A PRO: THE EASY, INTUITIVE CAPTURE NX



Nikon's revolutionary new software gives you an unprecedented degree of control over your images. Thanks to exclusive U Point™ Technology, by Nik Software, Capture NX does all the calculations for you, making it the first truly usable editing imaging software for all levels of photographers.



AF-S VR Zoom-Nikkor 70-300mm f/4-5.6G IF-ED



AF-S DX Zoom-Nikkor 55-200mm f/4-5.6G ED

With a high 4.3x zooming power, this compact, lightweight telephoto lens zooms further towards your subject while the VR (Nikon's exclusive Vibration Reduction) system eliminates blur caused by hand-shake.

\*The number of F-mount Nikkor lenses has reached 36 million, as of July 2006.



SB-400 attached to the D40



SB-600

For enhanced twilight shots or an added impact to daylight images. Ideal for entry-level users, the new SB-400 is compact, lightweight and offers many of Nikon's creative features. For even more versatility, creativity and performance from wireless flash photography, try the SB-600, which offers professional-level results in an easy-to-use format.



Nikon Speedlights