



At the heart of the image

DIGITAL CAMERA

COOLPIX

**L2
L3
L4**



**COOLPIX
L2/L3**



6.0 Megapixels / 5.1 Megapixels

3x Zoom

2.0-inch LCD

**COOLPIX
L4**



4.0 Megapixels

3x Zoom

2.0-inch LCD



DIGITAL CAMERA
**COOLPIX
L2/L3/L4**

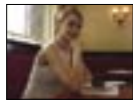
**COOLPIX L2/L3/L4 –
Nikon performance and
quality – refined**

Smooth, elegantly finished flat design.
Simplified operation that lets anyone
take a better class of picture.

Innovative in-camera Nikon
technologies mean
optimized pictures,
direct from your camera



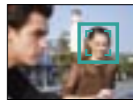
D-Lighting



D-Lighting rescues underexposed
images by improving brightness
and detail where needed, while
leaving correctly exposed areas
just as they are.



Face-priority AF*



The Face-priority AF feature automatically
detects and then focuses on people's
faces – regardless of where they are in the
frame – ensuring superb crisp-focus portraits.
*Face-recognition capability may be limited in
some shooting conditions.



In-Camera Red-Eye Fix

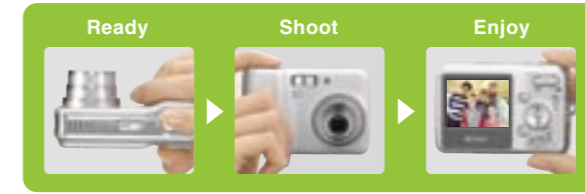


Nikon's exclusive In-Camera
Red-Eye Fix analyzes each image and
automatically finds and corrects any
accidental red-eye, which sometimes
occurs in flash photography, to produce
more natural-looking portraits.

Note: Images shown above are for representation purposes only.



Simple, effective and fun



**Sophisticated
features that preserve
the moment**

2.0-inch LCD

The bright 2.0-inch LCD avoids
the inconvenience of optical
viewfinders and simplifies
composition and playback,
leaving you free to enjoy the
moment.

3X zoom

A precision 3x Zoom-Nikkor lens covers
the key photographic range of 38 to
116mm (114mm for the COOLPIX L4)*,
putting everything from group portraits to
expansive landscapes within easy reach.
*35mm equivalent

**6.0/5.1 4.0 megapixel
clarity**

Generous in megapixel
resolution, the cameras deliver
instantly recognizable quality to
ensure pictures stay sharp, even
when significantly enlarged.

**COOLPIX
L2/L3**



**COOLPIX
L4**



Scene modes

15 different Scene modes –
4 with Scene assist – improve
your results by automatically
providing optimized settings
for everything from party
portraits to fireworks at night.

User-friendly operation

Camera operation is made easy
with on-screen menus and icons,
presented in an easy-to-read
format. Functions may be chosen
by icon or name and the new color scheme makes
operation easier on the eyes.

AA-size battery compatibility

Despite their compact dimensions,
the COOLPIX L2, L3, and L4 are
compatible with AA-size batteries,
one of the most widely available
battery sizes in the world. A battery life of approximately
180 shots* greatly increases their compact convenience.

*Approx. 180 shots (COOLPIX L2)/ Approx. 200 shots (L3)/ Approx.
250 shots (L4) when using two AA-size (LR6) alkaline batteries.

Movie recording

The capacity to record movies* in
three sizes – TV movie size (640)
for viewing on TV or computers,
convenient Small size (320), and
Smaller size (160) for extended
recording or Internet usage –
lets you capture so much more
of the moment.

*COOLPIX L4 without sound

PictBridge

The ability to connect directly to
any PictBridge-compatible printer
means that you can make great
prints without the need for a
computer to process the job.

PictureProject

Provided as a complimentary
accessory, PictureProject software
greatly simplifies the importing,
editing and organizing of your
images, and includes other options
that add to the fun of photography.



**COOLPIX
L2**



Gray

**COOLPIX
L3**



Silver



Black

**COOLPIX
L4**



Silver

Note: Supplied colors may differ by country or area.

Nikon Digital Camera COOLPIX L2/L3/L4 Specifications

Type:	Compact digital camera
Effective pixels:	L2: 6.0 million L3: 5.1 million L4: 4.0 million
CCD:	L2: 1/2.5-inch type (6.18 million total pixels) L3: 1/2.5-inch type (5.25 million total pixels) L4: 1/2.5-inch type (4.23 million total pixels)
Image modes:	L2: High (2816*), Normal (2816), Normal (2048), PC (1024), TV (640) L3: High (2592*), Normal (2592), Normal (2048), PC (1024), TV (640) L4: High (2272*), Normal (2272), Normal (1600), PC (1024), TV (640)
Lens:	L2 and L3: 3x Zoom-Nikkor; 6.3-19.2mm (35mm [135] format equivalent to approx. 38-116mm); f/3.2-5.3; 5 elements in 5 groups; Digital zoom: up to 4x L4: 3x Zoom-Nikkor; 6.3-18.9mm (35mm [135] format equivalent to approx. 38-114mm); f/2.8-4.9; 7 elements in 6 groups; Digital zoom: up to 4x
Focus range (approx.):	L2 and L3: 30cm (1 ft.) to infinity (∞), 10cm (3.9 in.) to infinity (∞) in Macro mode L4: 30cm (1 ft.) to infinity (∞), 4cm (1.6 in.) to infinity (∞) in Macro mode
LCD monitor:	L2 and L3: 2.0-inch type, 86,000-dot TFT LCD monitor with brightness adjustment L4: 2.0-inch type, 115,000-dot TFT LCD monitor with brightness adjustment
Storage media:	L2 and L3: Internal memory (approx. 23MB), SD memory card L4: Internal memory (approx. 10MB), SD memory card
Shooting modes:	Auto, 4 modes with Scene assist (Portrait, Landscape, Sports, Night Portrait), 11 Scene modes (Party/Indoor, Beach/Snow, Sunset, Dusk/Dawn, Night Landscape, Close Up, Museum, Fireworks Show, Copy, Back Light, Panorama Assist), Voice Recording (L2 and L3), BSS (Best Shot Selector), Color options, Blur Warning, Date Imprint, Self-timer (10 sec.)
Movie:	L2 and L3: With sound: TV movie (640) at 30fps/15fps, Small size (320) at 30fps/15fps, Smaller size (160) at 15fps L4: Without sound: TV movie (640) at 15fps, Small size (320) at 15fps, Smaller size (160) at 15fps
Capture modes:	L2 and L3: 1) Single 2) Continuous (approx. 1.7fps) 3) Multi-shot 16 L4: 1) Single 2) Multi-shot 16
Number of frames (w/ internal memory):	L2: 6M: High (2816*) approx. 8, Normal (2816) approx. 16, 3M: Normal (2048) approx. 29 L3: 5M: High (2592*) approx. 9, Normal (2592) approx. 18, 3M: Normal (2048) approx. 29 L4: 4M: High (2272*) approx. 3, Normal (2272) approx. 7, 2M: Normal (1600) approx. 15
Built-in flash:	Range: L2 and L3: Approx. 0.3-3.0m/1 ft. - 9 ft. 10 in. (W), Approx. 0.3-1.75m/1 ft. - 5 ft. 9 in. (T) L4: Approx. 0.4-3.0m/1 ft. 4 in. - 9 ft. 10 in. (W), Approx. 0.4-1.7m/1 ft. 4 in. - 5 ft. 7 in. (T); Flash modes: Auto, Auto with Red-eye Reduction (In-Camera Red-Eye Fix), Flash Cancel, Anytime Flash and Slow sync.
Interface:	L2 and L3: USB, Audio Video output L4: USB, Video output
Supported languages:	Total of 12 languages: German/English/Spanish/French/Italian/Dutch/Russian/Swedish/Japanese/Simplified Chinese/Traditional Chinese/Korean selectable in menu display
Power requirements:	Rechargeable Ni-MH Battery EN-MH1 x 2, AA-size battery (LR6 alkaline, ZR6 oxyride, or lithium) x 2, AC Adapter EH-65A (optional)
Battery life (approx.):	L2: 180 shots with alkaline, 600 shots with lithium, or 320 shots with EN-MH1 L3: 200 shots with alkaline, 630 shots with lithium, or 330 shots with EN-MH1 L4: 250 shots with alkaline, 600 shots with lithium, or 450 shots with EN-MH1 (based on CIPA standard)
Dimensions (WxHxD):	L2 and L3: Approx. 91 x 60.5 x 26mm (3.6 x 2.4 x 1.0 in.) L4: Approx. 86.5 x 60.5 x 34.5mm (3.4 x 2.4 x 1.4 in.)
Weight (approx.):	L2 and L3: 120g (4.2 oz.) without battery and SD memory card L4: 115g (4.1 oz.) without battery and SD memory card
Supplied accessories*:	Rechargeable Ni-MH Battery EN-MH1 x 2, Battery Charger MH-71, USB Cable UC-E6, Audio Video Cable EG-CP14 (L2 and L3)/Video Cable EG-CP11 (L4), Strap, PictureProject CD-ROM
Optional accessories:	Battery Charger MH-71, Rechargeable Ni-MH Battery EN-MH1 (EN-MH1-B2), AC Adapter EH-65A

* Supplied accessories may differ by country or area.

PictureProject System Requirements

OS	Macintosh: Mac® OS X version 10.1.5 or later (version 10.2.8 or later required for Burn Disc option) / Windows: Windows® XP Home Edition/Professional, Windows® 2000 Professional, Windows® Me, Windows® 98SE pre-installed models
RAM	Macintosh: 64MB or more recommended/ Windows: 64MB or more recommended (128MB with muvee option)
Hard disk	60MB required for installation
Display	800 x 600 or more with 16-bit color (full color recommended)
Others	CD-ROM drive required for installation Only built-in USB ports are supported

Microsoft® and Windows® are either registered trademarks or trademarks of Microsoft Corporation in the United States and/or other countries. Macintosh® and QuickTime® are either registered trademarks or trademarks of Apple Computer Inc. in the United States and/or other countries. The FotoNation logo is a trademark. The SD logo is a trademark. PictBridge is a trademark. D-Lighting technology is provided by Apical Limited. Face-priority AF technology is provided by Identix®. Products and brand names are trademarks or registered trademarks of their respective companies. Images on LCDs and monitors shown in this brochure are simulated.

Specifications and equipment are subject to change without any notice or obligation on the part of the manufacturer. February 2006 ©2006 NIKON CORPORATION



WARNING

TO ENSURE CORRECT USAGE, READ MANUALS CAREFULLY BEFORE USING YOUR EQUIPMENT. SOME DOCUMENTATION IS SUPPLIED ON CD-ROM ONLY.



NIKON CORPORATION

Fuji Bldg., 2-3, Marunouchi 3-chome, Chiyoda-ku
Tokyo 100-8331, Japan

<http://nikonimaging.com/>

En