



At the heart of the image

DIGITAL CAMERA
COOLPIX
L5



7.2 Megapixels

5x Zoom

2.5-inch LCD

Vibration Reduction

www.nikoncoolpix.info

Stay steady: clearer images with Nikon VR.

Originally developed for Nikon SLR systems, the advanced optical Vibration Reduction (VR) feature effectively counteracts the effect of camera-shake, enabling sharper images in lower light and even faster framing on the LCD.

VR Button

VR Unit



With VR



Without VR



With VR



Without VR

Sophisticated features make saving great memories easy.

7.2 megapixel resolution

7.2 effective megapixels provide precise image quality that performs extremely well even when significantly enlarged.



5x zoom

The 5x optical Zoom-Nikkor lens has a focal length of 38-190mm,* suitable for everything from tight portraits to expansive landscapes.

*35mm equivalent



2.5-inch LCD

Bright 115,000-dot, 2.5-inch LCD monitor with backlight makes composing and playing back images so easy that you won't miss a thing.



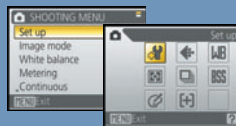
Scene modes

15 different Scene modes – 4 with Scene assist – automatically provide ideal settings for everything from night portraits to beach parties.



User-friendly operation

Operation is easier than ever, with higher-visibility menu functions that can be chosen by icon or name and a Help button that explains what you need to know with each function choice.



AA-size battery compatibility

The COOLPIX L5 is compatible with AA-size batteries, one of the world's most widely available battery sizes, giving you photo power wherever you go.



COOLPIX L5 Simple to use – you'll love the results

Pick up the COOLPIX L5 and you will immediately sense the quality and craftsmanship in design. Plus, the COOLPIX L5's advanced functionality and user-friendly features – like Vibration Reduction – let virtually any user shoot with confidence and show with pride.



VR button

Use this button to choose Normal VR for normal shooting, Active VR when greater movement is expected, or OFF when the function is not needed.



One-touch portrait button

One button gives convenient access to 3 innovative Nikon functions: Face-priority AF, In-Camera Red-Eye Fix and D-Lighting.



Simple, effective and fun



DIGITAL CAMERA
**COOLPIX
L5**



Nikon's innovative in-camera technologies ensure ideal results

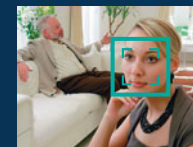
D-Lighting



Without D-Lighting

D-Lighting compensates for underexposed images by improving brightness and detail where needed, while leaving well-exposed areas just as they are.

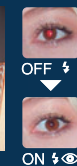
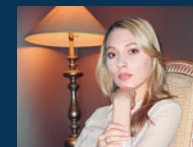
Face-priority AF*



No matter where your subject is in the frame, Face-priority AF automatically finds, then focuses on his or her face to give you satisfyingly sharp portraits more of the time.

*Face-recognition capability may be limited in some shooting conditions.

In-Camera Red-Eye Fix



Accidental red-eye, which can occur in flash photography, is history with Nikon's exclusive In-Camera Red-Eye Fix, which automatically analyzes and corrects each image to produce more natural-looking portraits.

Note: Images shown above are for representation purposes only.



Movie recording with sound

Record movies in three sizes: TV movie size (640) for viewing on TV or computers; convenient Small size (320); and Smaller size (160) for extended recording or Internet usage.



PictBridge

Connect directly to any PictBridge-compatible printer to make great prints without the need for a computer to process the job.



PictureProject

Complimentary PictureProject software greatly simplifies the importing, editing and organizing of your images.

Nikon Digital Camera COOLPIX L5 Specifications

Effective pixels:	7.2 million
CCD:	1/2.5-inch type (7.41 million total pixels)
Image modes:	High (3072 ²), Normal (3072), Normal (2592), Normal (2048), PC (1024), TV (640 38-190mm); f/2.9-5.0; 9 elements in 7 groups; Digital zoom: up to 4x
Lens:	5x Zoom-Nikkor; 6.3-31.4mm (35mm [135] format equivalent to approx. 38-190mm); f/2.9-5.0; 9 elements in 7 groups; Digital zoom: up to 4x
Focus range (approx.):	50cm (1 ft. 7.7 in.) to infinity (∞), 4cm (1.6 in.) to infinity (∞) in Macro mode
LCD monitor:	2.5-inch type, 115,000-dot TFT LCD monitor with brightness adjustment
Storage media:	Internal memory (approx. 8MB), SD memory card
Shooting modes:	Auto, 4 modes with Scene assist (Portrait, Landscape, Sports, Night Portrait), 11 Scene modes (Party/Indoor, Beach/Snow, Sunset, Dusk/Dawn, Night Landscape, Close Up, Museum, Fireworks Show, Copy, Back Light, Panorama Assist), BSS (Best Shot Selector), Color Options, Date Imprint, Self-timer (10 sec.)
Movie:	With sound: TV movie (640) at 30fps, Small size (320) at 30fps, Smaller size (160) at 30fps
Vibration Reduction(VR):	Lens shift VR (Normal/Active/Off)
Capture modes:	1) Single 2) Continuous (approx. 0.7fps) 3) Multi-shot 16 (Approx. 5fps, only available at image size 7M)
Number of frames (w/ internal memory):	7M: High (3072 ²) approx. 2, Normal (3072) approx. 4, 3M: Normal (2048) approx. 10
Built-in flash:	Range: approx. 0.5-5.5m /1 ft. 7.7 in. – 18 ft. 0.5 in. (W), approx. 0.6-4.0m / 1 ft. 12 in. – 13ft. 1.8 in. (T); Flash modes: Auto, Auto with Red-eye Reduction (In-Camera Red-Eye Fix), Flash Cancel, Anytime Flash and Slow sync.
Interface:	USB, Audio Video output
Supported languages:	Total of 20 languages: German/English/Spanish/French/Italian/Dutch/Russian/Swedish/Japanese/Simplified Chinese/Traditional Chinese/Korean/Thai/Portuguese/Polish/Indonesian/Finnish/Danish/Norwegian/Czech selectable in menu display
Power requirements:	Rechargeable Ni-MH Battery EN-MH1 x 2, AA-size battery (LR6 alkaline, ZR6 oxyride, or lithium) x 2, AC Adapter EH-65A (optional)
Battery life (approx.):	490 shots with lithium, 150 shots with alkaline, or 250 shots with EN-MH1 (based on CIPA standard)
Dimensions (WxHxD):	Approx. 97 x 61 x 45mm (3.8 x 2.4 x 1.8 in.) excluding projections
Weight:	Approx. 170g (6.0 oz.) without battery and SD memory card
Supplied accessories*:	Battery Charger MH-71, Rechargeable Ni-MH Battery EN-MH1 (EN-MH1-B2), USB Cable UC-E6, Audio Video Cable EG-CP14, Strap, PictureProject CD-ROM
Optional accessories:	Battery Charger MH-71, Rechargeable Ni-MH Battery EN-MH1 (EN-MH1-B2), AC Adapter EH-65A * Supplied accessories may differ by country or area.

PictureProject System Requirements

OS	Macintosh: Mac® OS X version 10.3.9 or later / Windows: Windows® XP Home Edition/ Professional, Windows® 2000 Professional pre-installed models
Note	CD-ROM drive required for installation. Only built-in USB ports are supported.

Microsoft® and Windows® are either registered trademarks or trademarks of Microsoft Corporation in the United States and/or other countries. Macintosh® and QuickTime® are either registered trademarks or trademarks of Apple Computer Inc. in the United States and/or other countries. The FotoNation logo is a trademark. The SD logo is a trademark. PictBridge is a trademark. D-Lighting technology is provided by Apical Limited. Face-priority AF technology is provided by Identix®. Pictmotion contains patented technologies provided by muvee Technologies Pte. Ltd. Products and brand names are trademarks or registered trademarks of their respective companies. Images on LCDs and monitors shown in this brochure are simulated.

Specifications and equipment are subject to change without any notice or obligation on the part of the manufacturer. August 2006 ©2006 NIKON CORPORATION



 WARNING	TO ENSURE CORRECT USAGE, READ MANUALS CAREFULLY BEFORE USING YOUR EQUIPMENT. SOME DOCUMENTATION IS SUPPLIED ON CD-ROM ONLY.
---	--

Nikon U.K. Ltd
380 Richmond Road, Kingston, Surrey KT2 5PR, U.K.
www.nikon.co.uk, www.europe-nikon.com

Foto Distributors
516 Kyalami Boulevard, Kyalami Business Park,
Midrand, 1684 Johannesburg, South Africa



NIKON CORPORATION
Fuji Bldg., 2-3, Marunouchi 3-chome, Chiyoda-ku
Tokyo 100-8331, Japan
<http://nikonimaging.com/>