



DIGITAL CAMERA
COOLPIX
S4

At the heart of the image



10X
zoom

6.0
Megapixels

2.5"
LCD

The range to roam freely – with all the angles covered



Nikon's new COOLPIX S4 digital camera offers a stylish solution for active people with an eye for design, a need for go-anywhere versatility and the desire to take consistently great pictures without fuss. The sophisticated design incorporates a newly developed CCD image sensor with 6.0 effective megapixels of sharp resolution, a long-range swivel-mounted 10x Zoom-Nikkor lens, and a bright, clear 2.5-inch LCD monitor into a slim, compact body that is comfortable to hold and easy to operate.

The COOLPIX S4 – discover the full pleasure of outstanding power, flexibility and style.

10x
zoom

6.0
Megapixels

2.5"
LCD



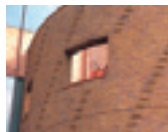


Bring your world in as close as you please



The irresistibly slim design of the COOLPIX S4 conceals a high-quality 10x Zoom-Nikkor lens. With extended range from 38mm medium-wide through 380mm telescopic*, the swivel-mounted lens is equally adept at taking great shots of all types, including architecture, portraits, extreme close-ups, or any other composition that sparks your creativity as you explore your world. *35mm equivalent.

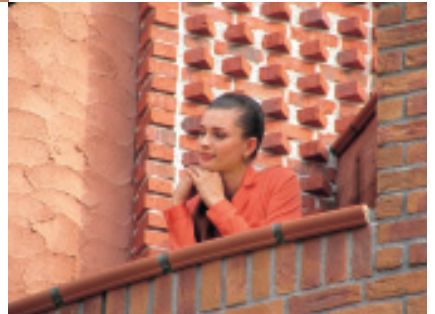
10 x o p t i c a l z o o m



38mm



100mm



380mm



Cover all the angles in style with a satisfying twist



S w i v e l d e s i g n

The slim, compact design of the COOLPIX S4 adds a delightful and practical twist by integrating its broad 10x zoom range into a swivel design that offers a wider range of shooting angles for greater creative freedom.





The smooth style of easy operation
and big, bright previews



Select functions either by name or by icon for maximum operating ease. If you ever want a main menu selection explained, simply press the handy Help button.

2.5-inch LCD monitor

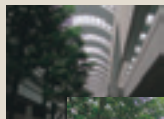
The large, bright 2.5-inch LCD monitor fills the camera's back, making it a pleasure to review shots, or to share the fun with others.



Innovative Nikon technologies help optimize results

D-Lighting

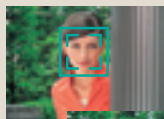
Without D-Lighting



With D-Lighting

D-Lighting brings out optimal detail and contrast by compensating for underexposed areas without affecting properly exposed areas.

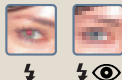
Face-priority AF*



Face-priority AF employs advanced technologies to automatically locate and focus on people's faces, ensuring great portraits with sharp focus every time.

* Face recognition capability may be limited in some shooting conditions.

In-Camera Red-Eye Fix



Nikon's exclusive In-Camera Red-Eye Fix performs automatic in-camera correction to rid photos of the annoying problem of red-eye that sometimes occurs in flash photography for pleasing, natural-looking results.

Advanced features for maximum versatility

16 Scene Modes; 4 with Scene Assist

Simply select the mode that matches the scene, snap the shutter, and enjoy the spectacular results of automatically optimized settings.



Macro shooting

4 Movie Modes

Record movies with sound at 15fps in TV (640 x 480) or small size (320 x 240) modes. Time-lapse Movie mode allows recording at 640 x 480 without sound.



Compatible with AA-size batteries

Compatibility with one of the most widely available battery sizes means never finding yourself short of power when a photo opportunity arises.



Rechargeable Ni-MH Battery EN-MH1-B2

SD memory card support plus approx. 13.5MB internal memory

SD memory cards are compact, fast, and widely available. Additionally, 13.5MB (approx.) of built-in memory ensures you always get your shot, even when you don't have an SD card handy.



Direct Printing with PictBridge

Connect the COOLPIX S4 directly to any PictBridge-compatible printer for a quick and convenient way to make great prints.



PictureProject

PictureProject software (included) offers a versatile, powerful and user-friendly interface for transferring, organizing, editing and sharing your pictures.



PictureProject

Nikon Digital Camera COOLPIX S4 Specifications

Type:	Compact digital camera
Effective pixels:	6.0 million
CCD:	1/2.5-inch type (6.4 million total pixels)
Image modes:	High (2816*), Normal (2816), Economy (2048), PC (1024), TV (640)
Lens:	10x Zoom-Nikkor; 6.3-63mm (35mm [135] format equivalent to 38-380mm); f/3.5; 12 elements in 9 groups; Digital zoom: up to 4x (35mm [135] format equivalent to approx. 1520mm)
Focus range:	30cm (12 in.) to infinity (∞), approx. 4cm (1.6 in.) to infinity (∞) in Macro mode
LCD monitor:	2.5-inch type, 110,000-dot TFT LCD monitor with brightness adjustment
Storage media:	Internal memory: approx. 13.5MB, SD memory card
Shooting modes:	Auto, Scene Assist (Portrait, Landscape, Sports, Night Portrait), Scene (Party/Indoor, Beach/Snow, Sunset, Dusk/Dawn, Night Landscape, Close up, Museum, Fireworks Show, Copy, Back Light, Panorama Assist, Voice Recording), BSS (Best Shot Selector), AE-BSS, Color Options, Blur Warning, Date Imprint, Self-timer (10 sec.)
Movie:	With sound: TV movie (640) at 15fps, Small size (320) at 15fps, Smaller size (160) at 15fps; Without sound: Time-lapse movie at 15fps
Capture modes:	1) Single, 2) Continuous (approx. 1.3fps), 3) Multi-shot 16 (16 frames 1/16 in. size)
Number of frames (w/ Internal memory):	High (2816*) approx. 4, Normal (2816) approx. 9
Built-in flash:	Range: 0.4-3.0m/ 1 ft. 4 in. – 10 ft.; Flash modes: Auto, Auto with Red-eye Reduction (In-Camera Red-Eye Fix), Anytime Flash, Flash Cancel and Slow Sync.
Interface:	USB
Supported languages:	German/English/Spanish/French/Italian/Dutch/Swedish/Japanese/Simplified Chinese/Traditional Chinese/Korean/Russian selectable in menu display
Power requirements:	Two AA-size batteries (Rechargeable Ni-MH Battery EN-MH1-B2 with Battery Charger MH-71, LR6 alkaline batteries, ZR6 oxy-nickel batteries and FR6/L91 lithium batteries), AC Adapter EH-62B
Battery life (approx.):	Approx. 290 shots with EN-MH1-B2 Rechargeable Batteries, approx. 450 shots with lithium batteries, approx. 160 shots with LR6 (AA-size alkaline batteries) (based on CIPA standard*)
Dimensions (W x H x D):	Approx. 111.5 x 68.5 x 37mm (4.4 x 2.7 x 1.4 in.)
Weight:	Approx. 205g (7.2 oz.) (without batteries and memory card)
Supplied accessories:**	Neck strap, USB Cable UC-E6, Audio Video Cable EG-CP14, Rechargeable Ni-MH Battery EN-MH1-B2, Battery Charger MH-71, Lens cap, PictureProject CD-ROM
Optional accessories:	AC Adapter EH-62B

* Industry standard for measuring life of camera batteries. Measured at 25°C (77°F); zoom adjusted with each shot, built-in flash fired with every other shot, image mode set to Normal.

** Supplied accessories may differ by country or area.

PictureProject System Requirements

OS	Macintosh: Mac® OS X version 10.1.5 or later (version 10.2.8 or later required for Burn Disc option) / Windows: Windows® XP Home Edition/Professional, Windows® 2000 Professional, Windows® Me, Windows® 98SE pre-installed models
RAM	Macintosh: 64MB or more recommended/ Windows: 64MB or more recommended (128MB with muvee option)
Hard disk	60MB required for installation
Display	800 x 600 or more with 16-bit color (full color recommended)
Others	CD-ROM drive required for installation Only built-in USB ports are supported

Microsoft® and Windows® are either registered trademarks or trademarks of Microsoft Corporation in the United States and/or other countries. Macintosh® and QuickTime® are either registered trademarks or trademarks of Apple Computer Inc. in the United States and/or other countries. The FotoNation logo is a trademark. The SD logo is a trademark. PictBridge is a trademark. D-Lighting technology is provided by Apical Limited. Face-priority AF technology is provided by Identix®. Products and brand names are trademarks or registered trademarks of their respective companies. Images on LCDs and monitors shown in this brochure are simulated.

Specifications and equipment are subject to change without any notice or obligation on the part of the manufacturer. August 2005 ©2005 NIKON CORPORATION



WARNING

TO ENSURE CORRECT USAGE, READ MANUALS CAREFULLY BEFORE USING YOUR EQUIPMENT, SOME DOCUMENTATION IS SUPPLIED ON CD-ROM ONLY.



NIKON CORPORATION

Fuji Bldg., 2-3, Marunouchi 3-chome, Chiyoda-ku
Tokyo 100-8331, Japan

<http://nikonimaging.com/>

En