

you can
Canon

EF LENS

EF 28-300mm
f/3.5-5.6L IS USM

from here to here to here



From wide to super-telephoto – instantly. Frame your shots at will with revered L-Series quality: 11x zoom with Image Stabilizer and silent, fast auto focus. Ultimate quality, ultimate versatility.

- Ultra-high magnification 11x zoom
- Superb L-series image quality
- Image Stabilizer compensates approximately 3 stops
- Minimum Focusing Distance of 0.7m
- Lens coatings and optimum lens shape minimise ghosting and flare
- Full-time manual focus possible in AF mode
- Dust-proof, drip-proof construction
- Circular aperture diaphragm for beautiful background blur effect
- Precise distance information passed to E-TTL II metering



OFFICIAL PARTNER



With an ultra-high 11x zoom range covering everything from wide-angle to super-telephoto, Canon's latest pro for professional photographers looking to limit lens changes and overall kit weight.

With Image Stabilization (IS) and high speed, silent auto focus, this superbly specified lens delivers what others can only imagine.

The 0.7m minimum focusing distance throughout the entire zoom range makes it suitable for close-up magnifications.

Lens shape and coatings have been optimised to suppress ghosting and flaring, making the lens ideal for use with digital cameras that can be susceptible to reflections off the recording sensor. When fitted to digital cameras with an APS-C size sensor, the lens has an equivalent focal length range of 45-480mm.

Specifications EF 28-300mm f/3.5-5.6L IS USM

Lens Construction	23 elements in 16 groups
Coating	Super Spectra Coating
Diagonal Angle of View	75° - 8° 15'
Vertical Angle of View	46° - 4° 35'
Horizontal Angle of View	65° - 6° 50'
AF Drive System	Ring USM
Manual Focusing	Enabled with focus mode switch and focusing ring (full-time manual focusing)
Focusing Range	0.7m to infinity (at all zoom focal lengths)
Maximum Magnification (x)	0.06 (Wide); 0.3 (Tele)
Mount Type	Canon EF mount
Minimum Aperture	f/22 - 38 (f/22 - 40 for cameras featuring 1/3-stop increments)
Aperture Blades	8 (circular type)
Filter Diameter	77mm
Diameter x Length	92x184mm
Weight	1,670g

Lens Hood	ET-83G
Lens Cap	E-77U
Lens Case	LZ1324
Extension Tube EF12 II	Compatible
Extension Tube EF25 II	Only compatible in Tele mode
EF 1.4x II or EF 2x II	Not compatible
Image Stabilizer (IS)	Included; activated by pressing the shutter button halfway
IS Modes	Mode 1: normal image stabilization Mode 2: unidirectional image stabilization
IS Max. Deviation	+/- 1.1mm
IS Max. Correction Angle	+/- 0.5° (at telephoto, infinity)

Some images are simulated for clarity of reproduction. All data is based on Canon's standard testing methods. This leaflet and the specifications of the product have been developed prior to the date of product launch. Final specifications are subject to change without notice. ™ and ®: All company and/or product names are trademarks and/or registered trademarks of their respective manufacturers in their markets and/or countries.

Screen change in accordance with focal length (EF 28 - 300mm)



28mm



35mm



50mm



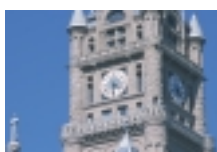
70mm



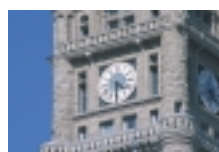
90mm



135mm



200mm



300mm

you can
Canon

Canon Inc
www.canon.com

Canon Europa NV
www.canon-europe.com

0042W015 © Canon Europa NV 2004

